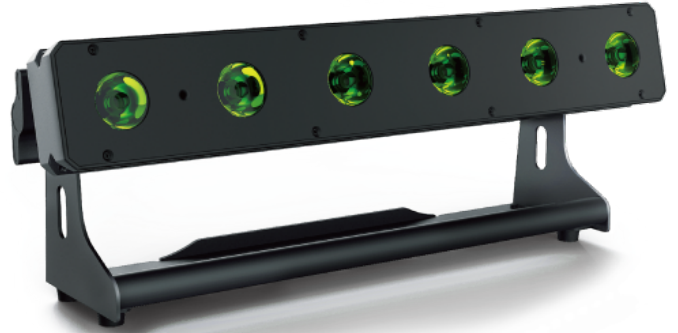


## PixBar Pro 612 DMX Chart

### Technical Specifications:

- LED: 6X12W 6IN1 LED
- Beam angle: 25degree
- Power: 85W
- Voltage: AC100V-250V. 60Hz-50Hz
- DMX control: 2,6,6,8,12,74,78 channel
- Master and slave control
- LCD display (Mode, Up, Down, Enter)
- Size:450\*147\*145MM
- N.W.: 4 KG



### DMX CHANNEL MODE

#### 2CH

CH1	Dimmer	000	-	255	0-100% master dimmer
CH2	macros	000	-	005	off
		006	-	013	r=255;g=0;b=0;
		014	-	021	r=255;g=128;b=0;
		022	-	029	r=255;g=165;b=0;
		030	-	037	r=255;g=222;b=0;
		038	-	045	r=0;g=255;b=0;
		046	-	053	r=0;g=255;b=150;
		054	-	061	r=0;g=255;b=255;
		062	-	069	r=0;g=0;b=255;
		070	-	077	r=215;g=0;b=255;
		078	-	085	r=255;g=0;b=180;
		086	-	093	r=255;g=0;b=108;
		094	-	101	r=255;g=94;b=140;
		102	-	109	r=255;g=171;b=61;
		110	-	117	r=255;g=207;b=155;
		118	-	125	r=211;g=255;b=255;
		126	-	128	change off
129		192	change speed from slow to fast		
193	-	255	fade speed from slow to fast		

**6CH 1**

CH1	dimmer	000	-	255	0-100% master dimmer
CH2	strobe	000	-	005	Strobe open
		006	-	010	Strobe OFF
		011	-	250	0Hz - 20Hz Strobe speed from slow to fast
		251	-	255	Strobe open
CH3	macros	000	-	005	Off
		006	-	013	r=255;g=0;b=0;
		014	-	021	r=255;g=128;b=0;
		022	-	029	r=255;g=165;b=0;
		030	-	037	r=255;g=222;b=0;
		038	-	045	r=0;g=255;b=0;
		046	-	053	r=0;g=255;b=150;
		054	-	061	r=0;g=255;b=255;
		062	-	069	r=0;g=0;b=255;
		070	-	077	r=215;g=0;b=255;
		078	-	085	r=255;g=0;b=180;
		086	-	093	r=255;g=0;b=108;
		094	-	101	r=255;g=94;b=140;
		102	-	109	r=255;g=171;b=61;
		110	-	117	r=255;g=207;b=155;
		118	-	125	r=211;g=255;b=255;
126	-	128	change stop		
129		192	Change speed from slow to fast		
193	-	255	Fade speed from slow to fast		
CH4	dimmer	0	-	255	W
CH5	dimmer	0	-	255	A
CH6	dimmer	0	-	255	U

**6CH 2**

CH1	R	0-255	0-100%
CH2	G	0-255	0-100%
CH3	B	0-255	0-100%
CH4	W	0-255	0-100%
CH5	A	0-255	0-100%
CH6	U	0-255	0-100%

**8CH**

CH1	dimmer	000	-	255	0-100% master dimmer
CH2	strobe	000	-	005	Strobe on
		006	-	010	Strobe off
		011	-	033	Pulse strobe from slow to fast
		034	-	056	Ramp up Random from slow to fast
		057	-	079	Ramp down Random from slow to fast
		080	-	102	Random strobe
		103		127	Strobe break from slow to fast
		128	-	250	Strobe from slow to fast
		251	-	255	Strobe open
CH3	R	000	-	255	0% to 100%
CH4	G	000	-	255	0% to 100%
CH5	B	000	-	255	0% to 100%
CH6	W	000	-	255	0% to 100%
CH7	A	000	-	255	0% to 100%
CH8	U	000	-	255	0% to 100%

**12CH**

CH1	Dimmer	000	-	255	0-100% master dimmer
CH2	Strobe	000	-	005	Strobe on
		006	-	010	Strobe off
		011	-	033	Pulse strobe from slow to fast
		034	-	056	Ramp up Random from slow to fast
		057	-	079	Ramp down Random from slow to fast
		080	-	102	Random strobe
		103		127	Strobe break from slow to fast
		128	-	250	Strobe from slow to fast
		251	-	255	Strobe open
CH3	R	000	-	255	0% to 100%
CH4	G	000	-	255	0% to 100%
CH5	B	000	-	255	0% to 100%
CH6	W	000	-	255	0% to 100%
CH7	A	000	-	255	0% to 100%
CH8	U	000	-	255	0% to 100%
		000	-	005	off
		006	-	013	r=255;g=0;b=0;
		014	-	021	r=255;g=128;b=0;

CH9	Marcos clour	022	-	029	r=255;g=165;b=0;
		030	-	037	r=255;g=222;b=0;
		038	-	045	r=0;g=255;b=0;
		046	-	053	r=0;g=255;b=150;
		054	-	061	r=0;g=255;b=255;
		062	-	069	r=0;g=0;b=255;
		070	-	077	r=215;g=0;b=255;
		078	-	085	r=255;g=0;b=180;
		086	-	093	r=255;g=0;b=108;
		094	-	101	r=255;g=94;b=140;
		102	-	109	r=255;g=171;b=61;
		110	-	117	r=255;g=207;b=155;
		118	-	125	r=211;g=255;b=255;
		126	-	128	change stop
		129		192	Change speed from slow to fast
193	-	255	Fade speed from slow to fast		
CH10	Colour temperture correction	000	-	005	Off
		006	-	255	7200K - 3200K
CH11	auto mode(Overrid e RGBWAUV, Colour Macro, CT)	000	-	005	No functiopn
		006	-	023	02.DREAM
		024	-	041	03.METEOR
		042	-	59	04.FADE
		60	-	77	05.CHANG
		78	-	95	06.FLOW1
		96	-	113	07.FLOW2
		114	-	131	08.FLOW3
		132	-	149	09.FLOW4
		150	-	167	10.FLOW5
		168	-	185	11.FLOW6
		186	-	203	12.FLOW7
		204	-	221	13.FLOW8
		222	-	239	14.FLOW9
		240	-	255	15.FLOW10
CH12	Sound control	000	-	005	Sound control off
		006	-	255	Sound control low to high(mic sensititivity)

**38CH**

CH1	dimmer	000	-	255	0-100%master dimmer
CH2	Strobe	000	-	005	Strobe open
		006	-	010	Strobe closed
		011	-	033	Pulse strobe from slow to fast
		034	-	056	Ramp up Random from slow to fast
		057	-	079	Ramp down Random from slow to fast
		080	-	102	Random strobe
		103		127	Strobe break from slow to fast
		128	-	250	Strobe from slow to fast
		250	-	255	Strobe open
CH3	R1	000	-	255	0% to 100%
CH4	G1	000	-	255	0% to 100%
CH5	B1	000	-	255	0% to 100%
.....	.....	000	-	255	0% to 100%
CH37	A6	000	-	255	0% to 100%
CH38	U6	000	-	255	0% to 100%

**42CH**

CH1	dimmer	000	-	255	0-100%master dimmer
CH2	Strobe	000	-	005	Strobe on
		006	-	010	Strobe off
		011	-	033	Pulse strobe from slow to fast
		034	-	056	Ramp up Random from slow to fast
		057	-	079	Ramp down Random from slow to fast
		080	-	102	Random strobe
		103		127	Strobe break from slow to fast
		128	-	250	Strobe from slow to fast
		251	-	255	Pulse strobe from slow to fast
CH3	R1	000	-	255	0% to 100%
CH4	G1	000	-	255	0% to 100%
CH5	B1	000	-	255	0% to 100%
.....	.....	000	-	255	0% to 100%
CH37	A6	000	-	255	0% to 100%
CH38	U6	000	-	255	0% to 100%
		000	-	005	off
		006	-	013	r=255;g=0;b=0;

CH39	Macros colour	014	-	021	r=255;g=128;b=0;
		022	-	029	r=255;g=165;b=0;
		030	-	037	r=255;g=222;b=0;
		038	-	045	r=0;g=255;b=0;
		046	-	053	r=0;g=255;b=150;
		054	-	061	r=0;g=255;b=255;
		062	-	069	r=0;g=0;b=255;
		070	-	077	r=215;g=0;b=255;
		078	-	085	r=255;g=0;b=180;
		086	-	093	r=255;g=0;b=108;
		094	-	101	r=255;g=94;b=140;
		102	-	109	r=255;g=171;b=61;
		110	-	117	r=255;g=207;b=155;
		118	-	125	r=211;g=255;b=255;
		126	-	128	Colour jumping stop
		129		192	Colour jumping speed from slow to fast
193	-	255	Clour Fade speed from slow to fast		
CH40	Colour temperature correction	000	-	005	off
		006	-	255	7200K - 3200K
CH41	auto mode(Override RGBWAUV, Colour Macro, CT)	000	-	005	No function
		006	-	023	02.DREAM
		024	-	041	03.METEOR
		042	-	59	04.FADE
		60	-	77	05.CHANG
		78	-	95	06.FLOW1
		96	-	113	07.FLOW2
		114	-	131	08.FLOW3
		132	-	149	09.FLOW4
		150	-	167	10.FLOW5
		168	-	185	11.FLOW6
		186	-	203	12.FLOW7
		204	-	221	13.FLOW8
		222	-	239	14.FLOW9
		240	-	255	15.FLOW10
CH42	Sound control	000	-	005	Sound control closed
		006	-	255	Sound control low to high(mic sensitiviy)

## PIXEL FLIP

---

1	2	3	4	5	6
---	---	---	---	---	---

audience